

AT A GLANCE

COVID-19 has thrust major disruption into the working world. Businesses are faced with a critical balancing act of getting employees back to work while ensuring workplace safety. VANTIQ's **Back-To-Work Accelerator** enables businesses to rapidly deploy solutions to solve these needs.

KEY BENEFITS

- **Rapid development** of real-time applications
- **Mix-and-match capabilities** to address your needs
- **Fully customizable** to any industry and business environment
- **Open-ended integration** with cameras, IoT sensors, enterprise systems, and many other technologies

ABOUT VANTIQ

Built on a modern reactive architecture, VANTIQ is an agile development platform to build scalable, distributed real-time applications. Founded in 2015 by renowned technology leaders, VANTIQ provides maximum agility for businesses to drive operational innovation and accelerate real-time business awareness.

OUR MISSION

To Enable Organizations to Rapidly Deploy Modern Technologies for Competitive Advantage

CONTACT

www.VANTIQ.com
info@VANTIQ.com

Technologies for Operating in A New World Order

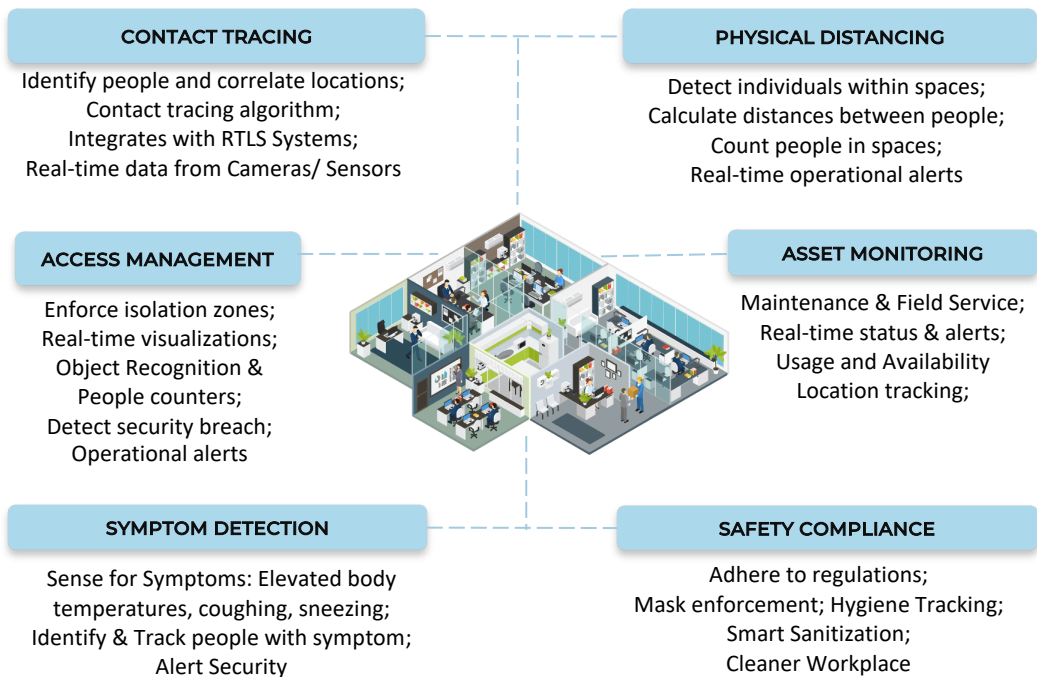
The VANTIQ **Back-to-Work Accelerator** is a prepackaged set of components and tools that allow businesses to safely return to work. Configurable to any business environments, the Accelerator provides a framework to jump start construction of solutions that enable the reopening of businesses.

Based on VANTIQ real-time Digital Twin technology, developers can quickly model the workplace and tie data coming from cameras, IoT devices and other enterprise systems. This data is used to create real-time awareness and decision making to better serve and monitor the workforce during the Coronavirus pandemic.

KEY FEATURES

- **Workplace model** that includes buildings, floors, spaces or rooms, and assets
- **Pre-built user interfaces** that can be easily customized
- **FloorPlan widget** for real-time visualizations of environments
- **Real-time dashboard** for operational monitoring and alerts
- **Workforce manager** with ability to add and assign roles to personnel
- **Real-time notification system**
- **Configurable real-time tracking** for assets and personnel
- **Extensible architecture** with library of plugins and pre-integrated devices

CORE COMPONENTS



CONNECTED ASSETS

Access Control

- Badges
- Gates
- Biometric

Cameras

- Thermal
- CCTV
- Drones
- Hypervisor

Equipment

- Testing
- Soap dispensers
- Health checks
- UV sterilizers

Sensors

- Bluetooth
- Counting
- Beacon
- Lidar

Wearables

- Covid detection
- Distance measure
- Masks
- Tracking