



Smart Cities

Enable individual city systems - as well as integrated systems across a smart city – to monitor situations and coordinate complex actions in real time

[Learn more](#)



Safety & Security

Recognize and act on business threats the moment they occur such as unauthorized access or hazardous situations

[Learn more](#)



Environmental Monitoring

Rapidly respond, analyze and act on environmental situations through a highly distributed ecosystem of sensors

[Learn more](#)



Asset Tracking

Manage the location, status and liabilities of important business assets through IoT sensors and maximize operational awareness

[Learn more](#)



Fleet Management

Locate, route and monitor your vehicles with real time operational intelligence and efficiency

[Learn more](#)



Field Service

Detect maintenance issues before they become major problems, identify the appropriate personnel and oversee issue resolution, all in real-time

[Learn more](#)



Logistics & Supply Chain

Utilize real-time tracking to gain operational insight over your supply chains to track location of materials and identify delays before they lead to disruptions

[Learn more](#)



Customer Management

Ensure customer service personnel and AI systems react to real-world events in real-time and provide a dynamic customer experience

[Learn more](#)



Smart Manufacturing

Increase production speed and product quality by dynamically coordinating human-machine collaboration

[Learn more](#)



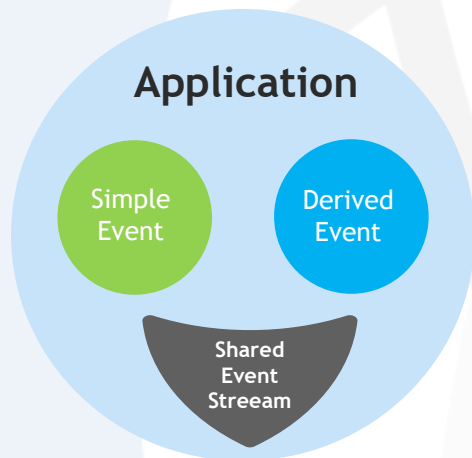
Application Integration

Combine legacy systems, databases, cloud services and APIs to transform your data pipeline into to a real-time event flow

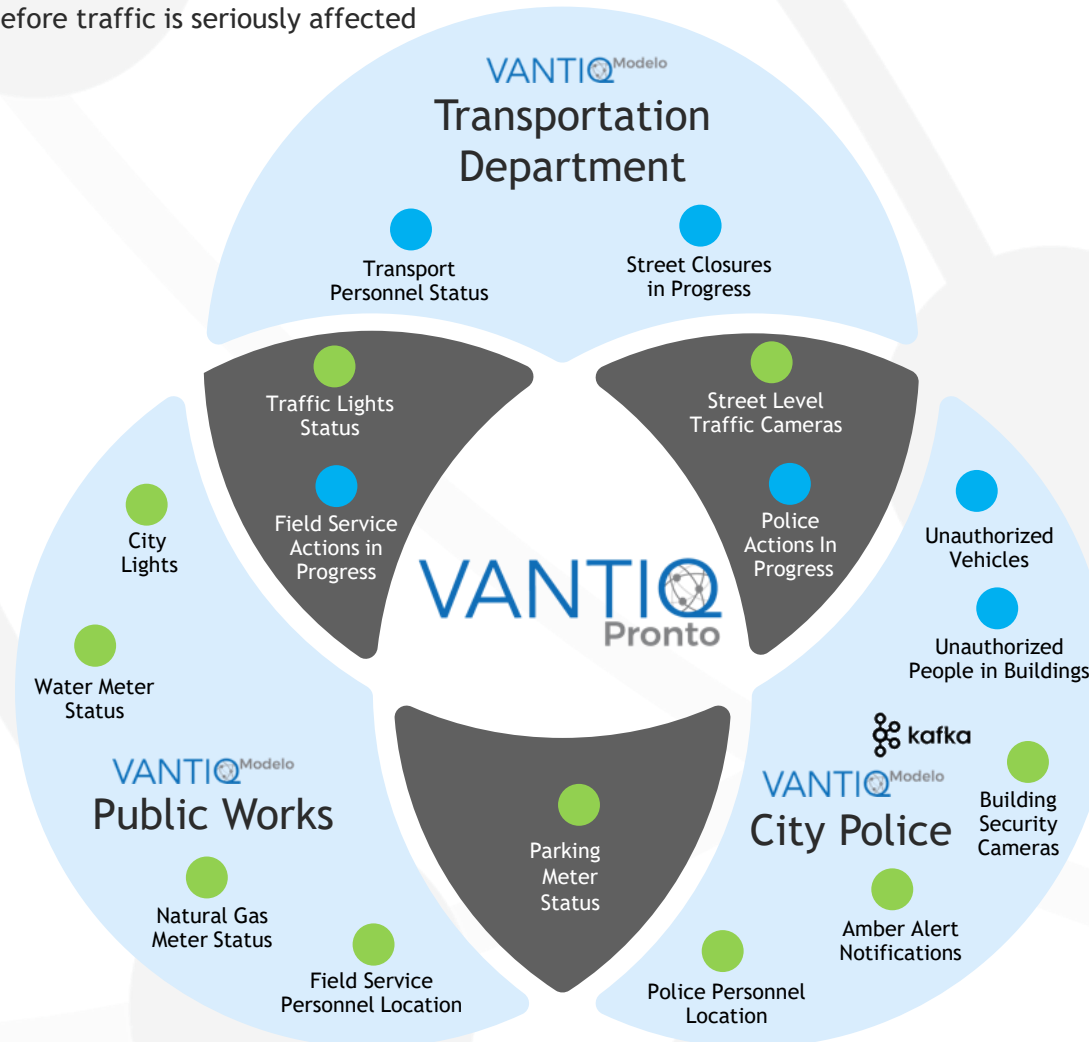
[Learn more](#)

Integration: Smart City Applications

Transportation Department
Application: Traffic Routing
Close or restrict city streets based on real-time activities of other departments before traffic is seriously affected



Public Works
Application: Real-Time Field Service
Sense the real-time status of city infrastructure; analyze it for issues or predicted issues; orchestrate appropriate actions to address issues



- ✓ Agile applications rapidly created and integrated together
- ✓ Consume and create events from the city's 'event catalog'
- ✓ Transforming, augmenting, and combining events create powerful 'derived events'
- ✓ Result: intelligent actions taken in real time

City Police
Application: Facility Security
Monitor and take real-time action on security issues in and around city buildings

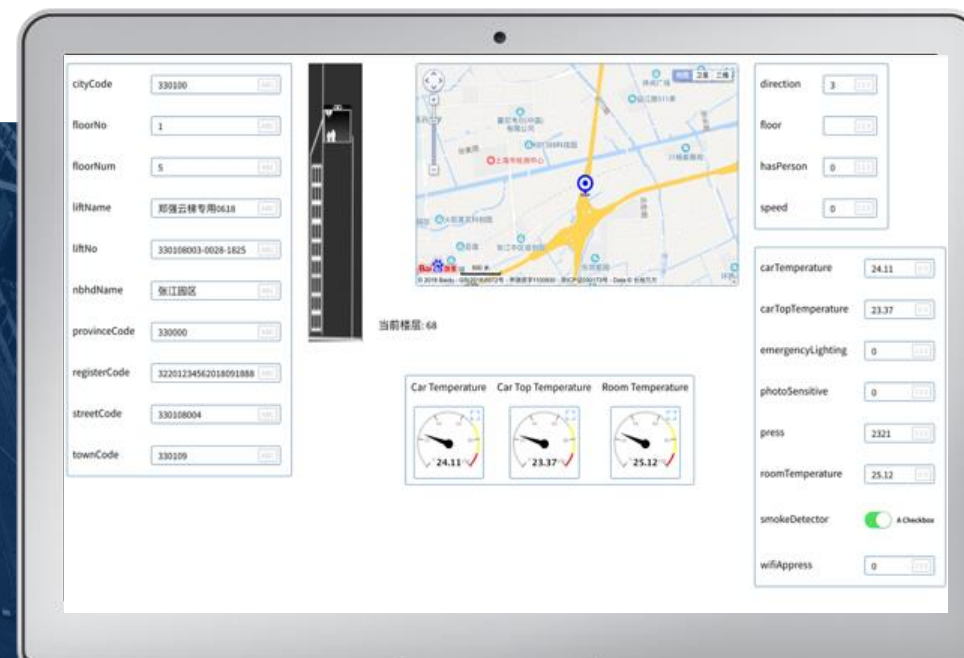
INESA/Shanghai Government - China

Application: VANTIQ's China partner INESA has released an application for monitoring the real-time status of elevators in Shanghai. Currently running with hundreds of elevators from two manufacturers, will eventually be extended to **250,000 in Shanghai**.

Why VANTIQ: The application requires the ability to accept real-time data in different formats from many different elevator manufacturers. VANTIQ Pronto makes it easy to transform the data into a standard format as it is ingested.

INESA
上海仪电

Transformative Results: The Shanghai Quality Control Bureau is using this application to guarantee that building operators are maximizing the **safety and security** of their elevator systems and coordinating their **efficient** use across Shanghai. With this system, one building engineer can now monitor/control 5 buildings (vs. 2 previously).

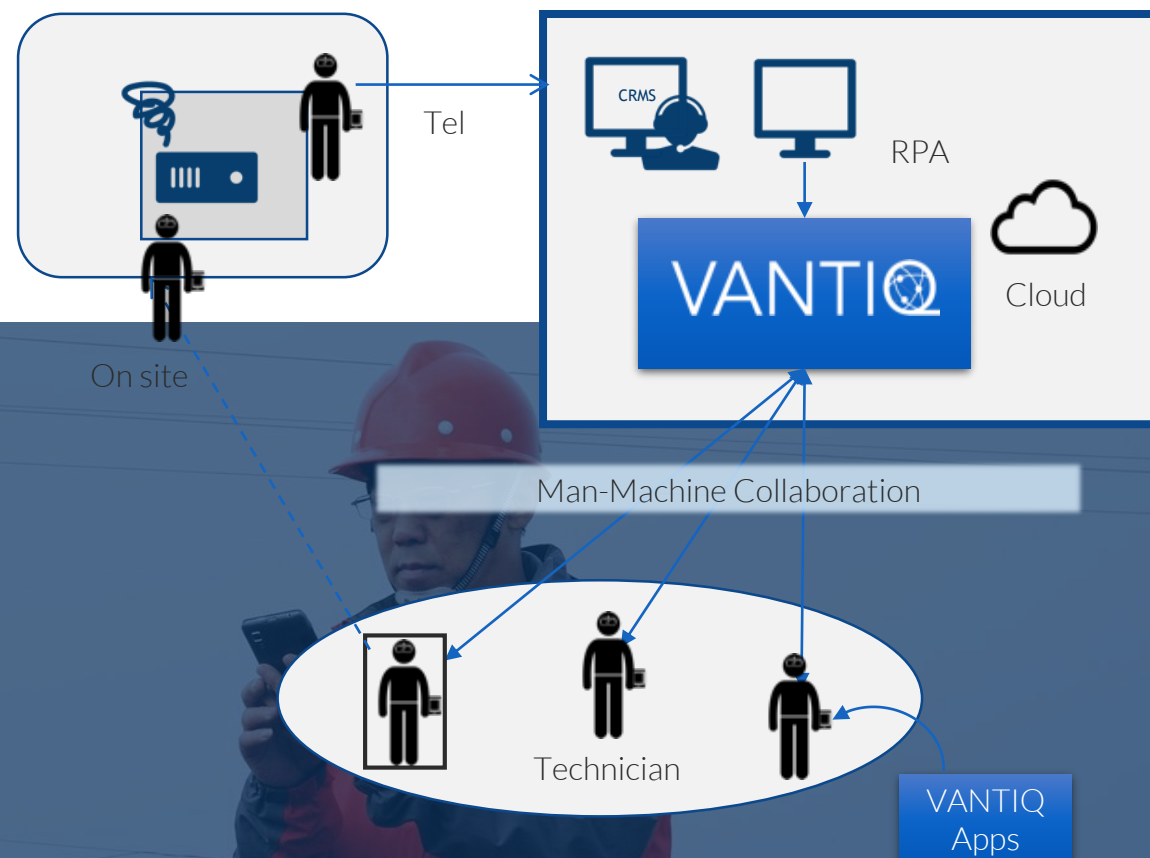


Mitsuiwa - Japan

Application: Mitsuiwa currently has a maintenance engineer call system which provides technical support for Fujitsu computers and equipment. They are building a modern application using VANTIQ which will **dynamically assign engineers** based on location, skill level, and availability via smart phones. Management reporting and interaction will be included in the application.

Why VANTIQ: The existing maintenance system has a ticketing systems that receives issues from customers, but lacks an automated assignment system. Everything is currently manually done and **lacks real-time visibility**.

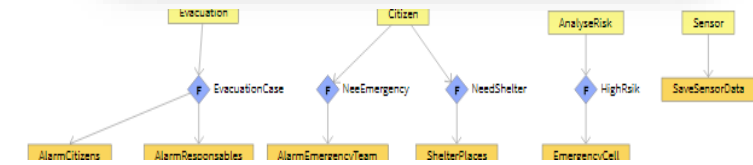
Transformative Results: Reduces time for assigning engineers from 20 minutes to just a few seconds with improved accuracy to provide **better customer support**. **Cost savings** result by decreasing administrative staff. This is very important in Japan because of **aging demographics**.



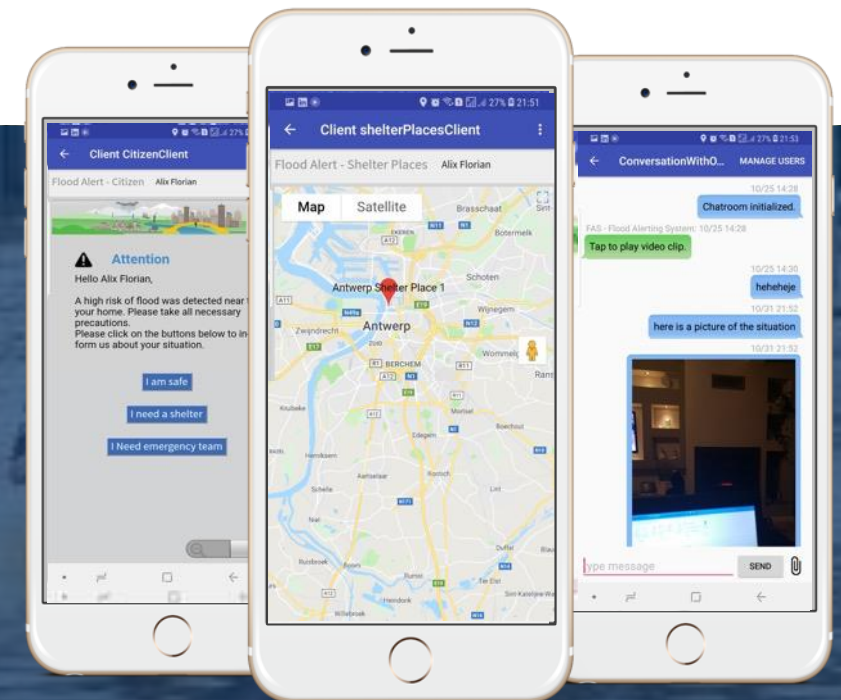
Flood Alerts - Belgium

Application: InfoSquare developed a Flood Alert application using VANTIQ to monitor and detect critical situations using IOT sensors. When a situation is detected, the application enables **citizens to be notified and/or trigger an alert when they are in danger** as well as **schedule rescue teams** to assist them.

Why VANTIQ: VANTIQ's man-machine **collaboration** is utilized to rescue people in **real-time**. It indicates the **closest shelter** and helps people **find the safest route**. It supports real-time chats with **AI real-time multi-language translations**. Belgium requires 3 official languages: Dutch, French and German. English is also offered.



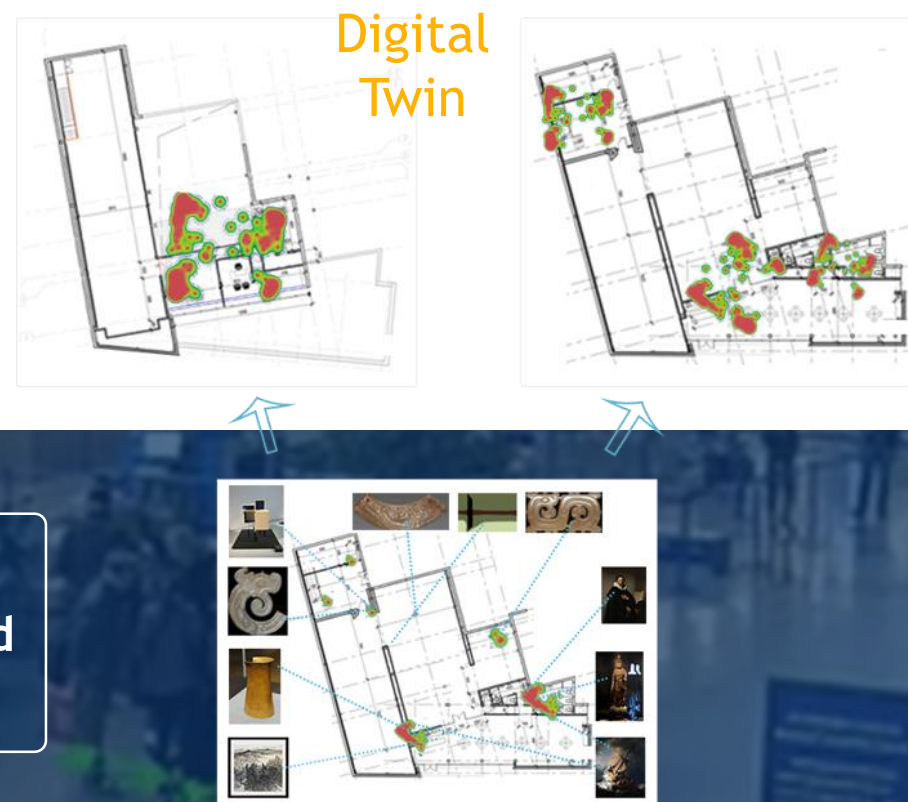
Transformative Results: The Authorities and Citizens can minimize risk of natural disasters, such as Floods, Fires or Earthquakes. The **life-saving and cost saving results** are the major benefits.



Video Recognition & Human-Machine Collaboration - China

Application: GLOTECH has developed an [AI](#) video recognition system to capture useful data in video streams. Based on the captures, VANTIQ can quickly generate the human-machine [collaboration](#) for real-time actions.

Why VANTIQ: VANTIQ can connect with Glotech's AI algorithms and capture the results. It may tell the [closest guard in real-time](#) where people crowd for accidents, or reporting for luggage tracking and locating.



Transformative Results: VANTIQ is the best platform to enable AI to be used in the real world with **limited cost** and staff to **improve safety**.

SODEXO - Brazil

Application: VANTIQ's To more effectively manage **hundreds of restaurants** in real-time

Why VANTIQ: VANTIQ is the backbone of Sodexo's digital transformation due to:

1. **Agility** of development (SI estimated speed of development at 40x)
2. **Distribution** of logic to restaurants
3. **Collaboration** with management in real-time
4. **Integration** with existing and new systems (AI) dynamically



Transformative Results: Through real time feedback, accurate predictions, and real-time management:

1. **Less waste**
2. **Reduced workload**
3. **Improved customer satisfaction**

 Centro de Lucro BR013028 RESTAURANTE SEDE SP Direção OPERAÇÃO SÃO PAULO - CAPITAL - CORPORATE		Grupo Econômico SODEXO DO BRASIL Regional OPERAÇÃO SÃO PAULO - CAPITAL - CORPORATE		Segmento SERVICE OPERATION Gerente de Área PAULA RAVANELLI AGRELLO BOGOMOLOV	
46 População Prédio		177 NES - Prevista NL		und NES - Pi	
Serviço	Ótimo	Bom	Regular		
	2	0	1		
Melhorar	Cardápio	Higiene	Atendimento	Outros	⚠️ Atenção! Avaliação Regular Cardápio - Sabor
	1	0	0	0	
Cardápio	Sabor	Apresentação	Porções	Outros	
	1	0	0	0	
Higiene	Mesas	Balcões	Utensílios	Outros	
	0	0	0	0	
Atendimento	Cortesia	Apresentação	Reposição	Outros	
	0	0	0	0	



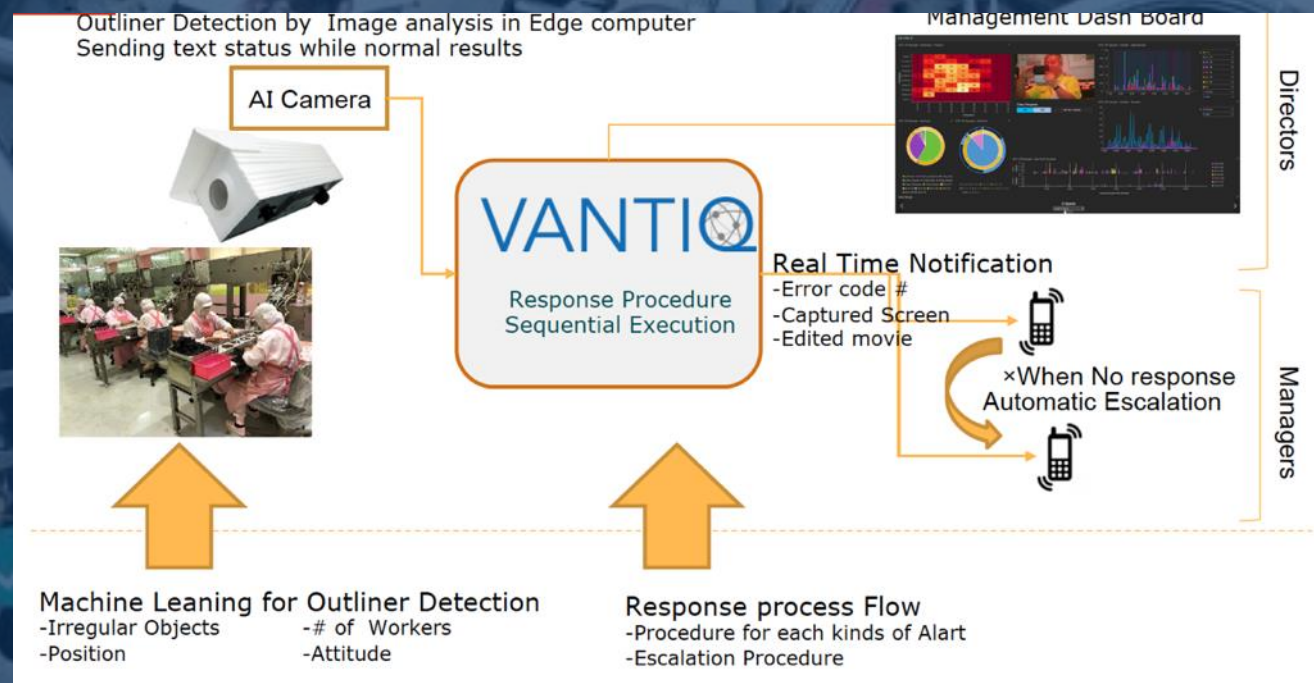
Recognition - Broader Biz - Japan

Application: Broader Biz is developing a [safety monitoring](#) application using VANTIQ to monitor worker's behavior via cameras and AI [image-recognition](#) to detect abnormal situations such as a worker falling down, and alerting operations personnel to take required actions.

Why VANTIQ: VANTIQ is [distributed to the edge](#) computers where AI cameras are installed to process rules that identify situations or problems. VANTIQ's man-machine [collaboration](#) is utilized to assign appropriate staff, at right time and right place.



Transformative Results: Clients of Broader Biz can **minimize risk** of worker safety incidents and food safety, such as food contamination. The **cost savings** can be significant.

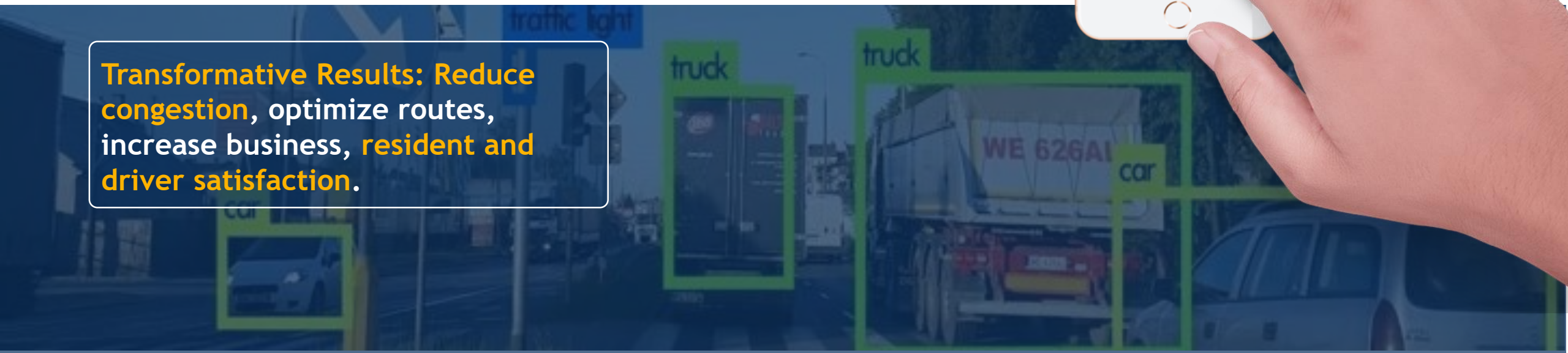


Global Top 5 Auto - US

Application: Client wants to **morph from a manufacturer** of vehicles into a 'mobility services company'. Initial application combines **3D digital twins** of roadways with **intelligent (AI image - recognition) vehicle detection** technology to enable the real-time **optimization of roadway use**. Initial use case involves automatically re-routing service vehicles on optimal routes based on the real-time state of roads being monitored.

Why VANTIQ: **Integration capability and agility.** As the number of technologies and partners involved in the project continues to grow it became obvious that a real-time orchestration layer was necessary to bring it all together. That's VANTIQ.

Transformative Results: Reduce congestion, optimize routes, increase business, resident and driver satisfaction.



Smart Car Testing - China

Application: Car testing becomes very complex with new energy, camera and “smart” radars. Hirain has developed a unique platform to **analyze** the test car performance in **real-time**. Vantiq is installed in the vehicle on the T-box to capture video clips and send data back to cloud for driving behavior analysis.

Why VANTIQ: Hirain quickly created the real-time analysis platform for connecting the data from testing cars in different environments. Installing **VANTIQ Edge** into the T-box allows Hirain to **capture all the valuable data and video clips for cloud analysis**, while dealing with the cellular performance limitations.



Transformative Results: VANTIQ is the best platform to provide edge computing and real-time analysis on the testing cars distributed in multiple locations, to **save the cost and improve the data quality**.



Altierre - Top Global Retailer - US

Application: Pioneer in graphical signs and sensors in retail sector. Client provides electronic shelf labels (ESLs) to display real-time pricing and precision marketing promotions to shoppers. **VANTIQ application monitors all infrastructure in real-time**, coordinates all issue notifications and resolutions, including third party **field service**.

Why VANTIQ: **Speed of development**, acceleration of new capabilities, real-time coordination, and reduced maintenance.

Transformative Results: Client able to define, develop, and deploy application rapidly with **small team**, and add new capabilities improving **profitability** and **customer satisfaction**.



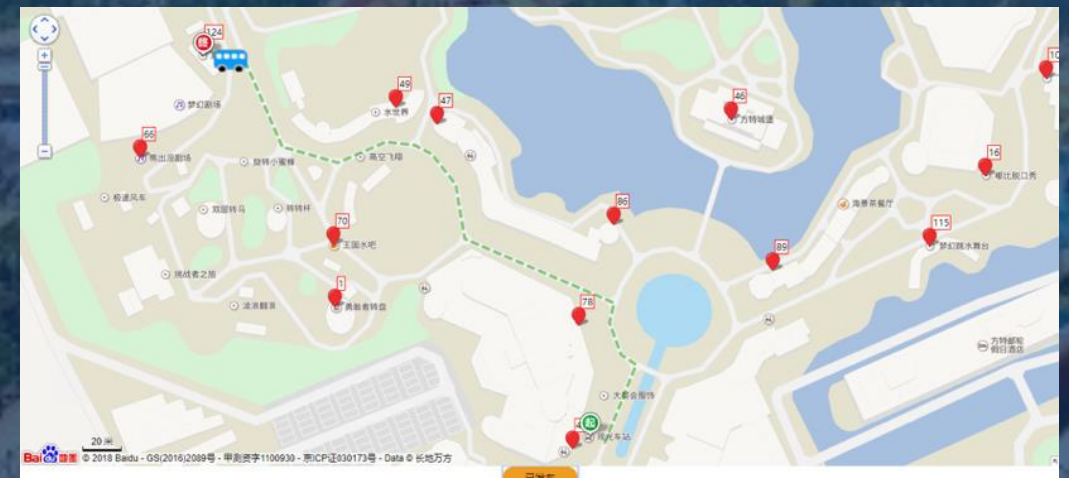
Fanta Park - China

Application: Fanta is an amusement park builder. They want to develop a Disney-like app to guide visitors (later AR) and effectively analyze guest consumer behavior for **upsell/x-sell**.

Why VANTIQ: Vantiq **integrates data** from the existing systems (ticketing system, POS, Wi-Fi hotspot etc.) to analyze consumer activities and the pattern of experience, in order to **improve the user experience** for scheduling rides, food, and other activities.



Transformative Results: The Fanta is very satisfied with the **efficiency of development**, quick analysis of consumer activities and the generation of mobile apps to achieve **true competitive advantage**.



Israeli Electric Co - Israel

Application: Field service technicians capture asset information in the field and **collaborate** with the back office to efficiently verify the information to **maximize safety and security**.

Why VANTIQ: VANTIQ is the solution that IEC chose to drive its overall technical **infrastructure modernization** effort due to the speed and **agility** of development. The high-power electric grid use case is just the first of many across the organization.

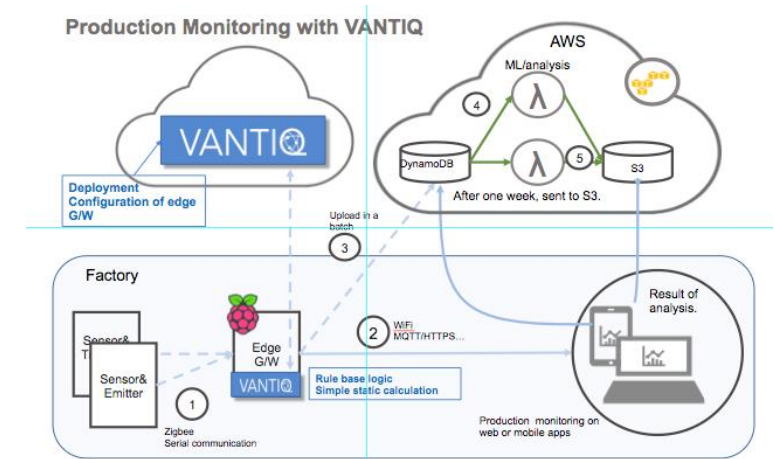


Transformative Results: Planning of work activates can now take place with up to date asset information, **reducing the cost of maintaining the assets and increasing health and safety for field technicians.**

iSmart Technologies - Japan

Application: iSmart Technology has a manufacturing monitoring application that collects sensor data and uploads it to the cloud for **visualization** of the status. To meet the different needs of the application for each customer, they are planning to use VANTIQ to provide additional capabilities such as **field service**, **preventive maintenance** and **energy management**.

Why VANTIQ: A part of the application needs to run on **edge** nodes in the factories, which will be different by customer. The system needs to be scaled up as the service is expected to be used by a rapidly increasing number of users.



Transformative Results: The iSmart Technology reduces cost of manufacturing. By rapid and agile development of value added services using VANTIQ iSmart will **increase revenue**.

Canon - Japan

Application: Canon ITS has its own [edge](#) computing solution connecting IoT devices and is developing and promoting integrated solutions with the VANTIQ platform for manufacturing customers.

Why VANTIQ: Factory automation and smart manufacturing projects need tailor-made software to most effectively monitor factory status and enable powerful human-machine [collaboration](#). Canon ITS chose VANTIQ as the core platform it uses primarily because of the [speed](#) with which it can build smart manufacturing systems.

Transformative Results: The Clients of Canon ITS radically transform their manufacturing processes from batch to real-time, significantly **increasing throughput and quality**.

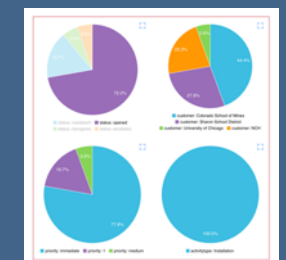
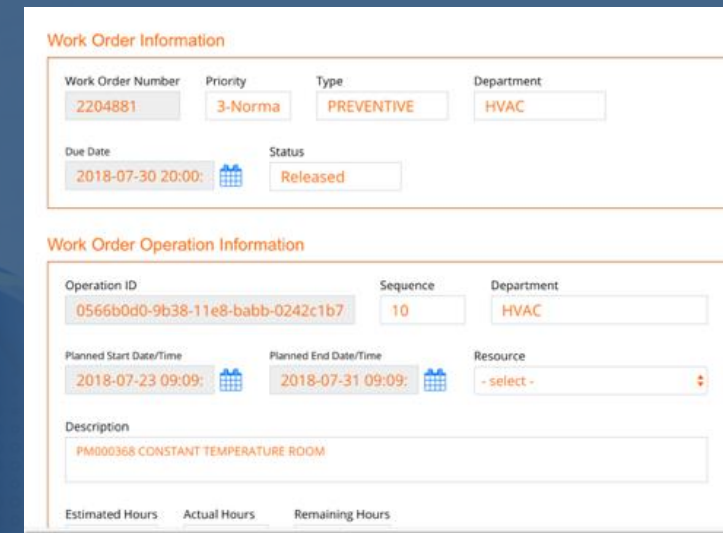


Application: The client has the contract to service the telecommunications equipment of a global telecom hardware provider across the US. A VANTIQ application manages the entire process from sensing when an issue has occurred, to finding and notifying the relevant technicians, to working **collaboratively** with them to address the issue.

Why VANTIQ: Speed to market. **After a failed earlier attempt** at developing such an application, the client needed an application to show their client with a **just a few weeks'** notice. VANTIQ was able to deliver and the client **won a \$50M deal as a result.**



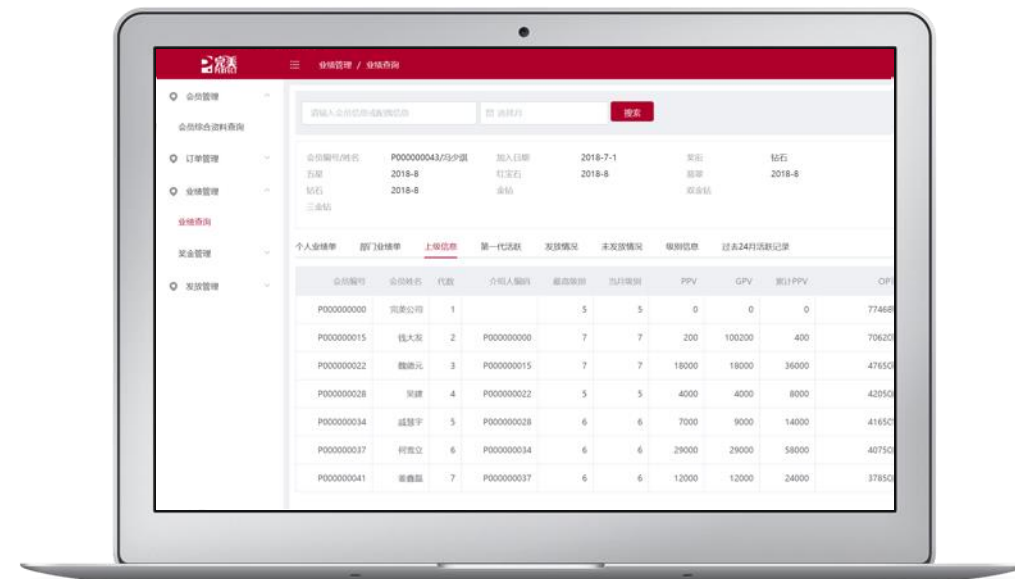
Transformative Results: Client was able to **rapidly** enable a brand new, massive business in the US because of VANTIQ.



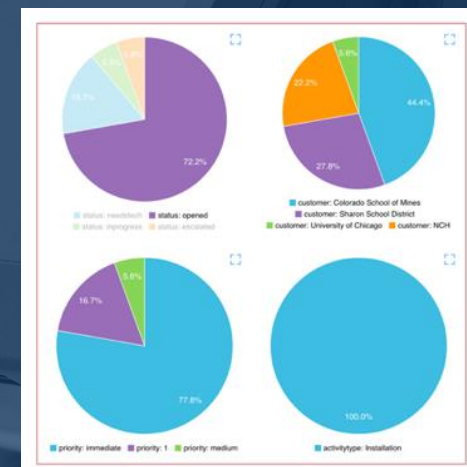
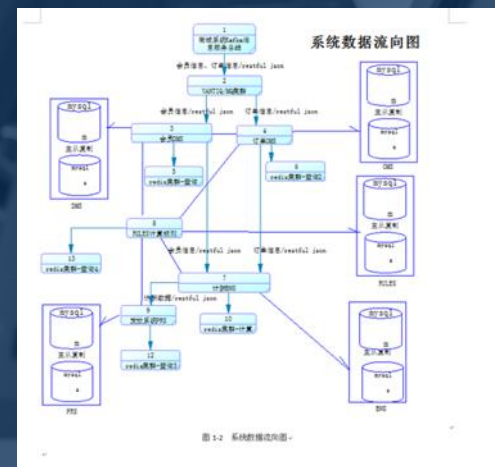
Perfect - China

Application: Perfect is the 3rd largest **direct sales** company in China, and is using Vantiq to build the event-driven messaging platform, to internally connect the store system and POS system, and provide a real-time sales reporting service.

Why VANTIQ: Vantiq offers the **quick development** and **connectivity to existing systems**, to reflect real-time sales performance, and calculation of sales bonuses.



Transformative Results:
The Using Vantiq, Perfect is able to quickly develop the **1st real-time CRM system in the direct sales business.**

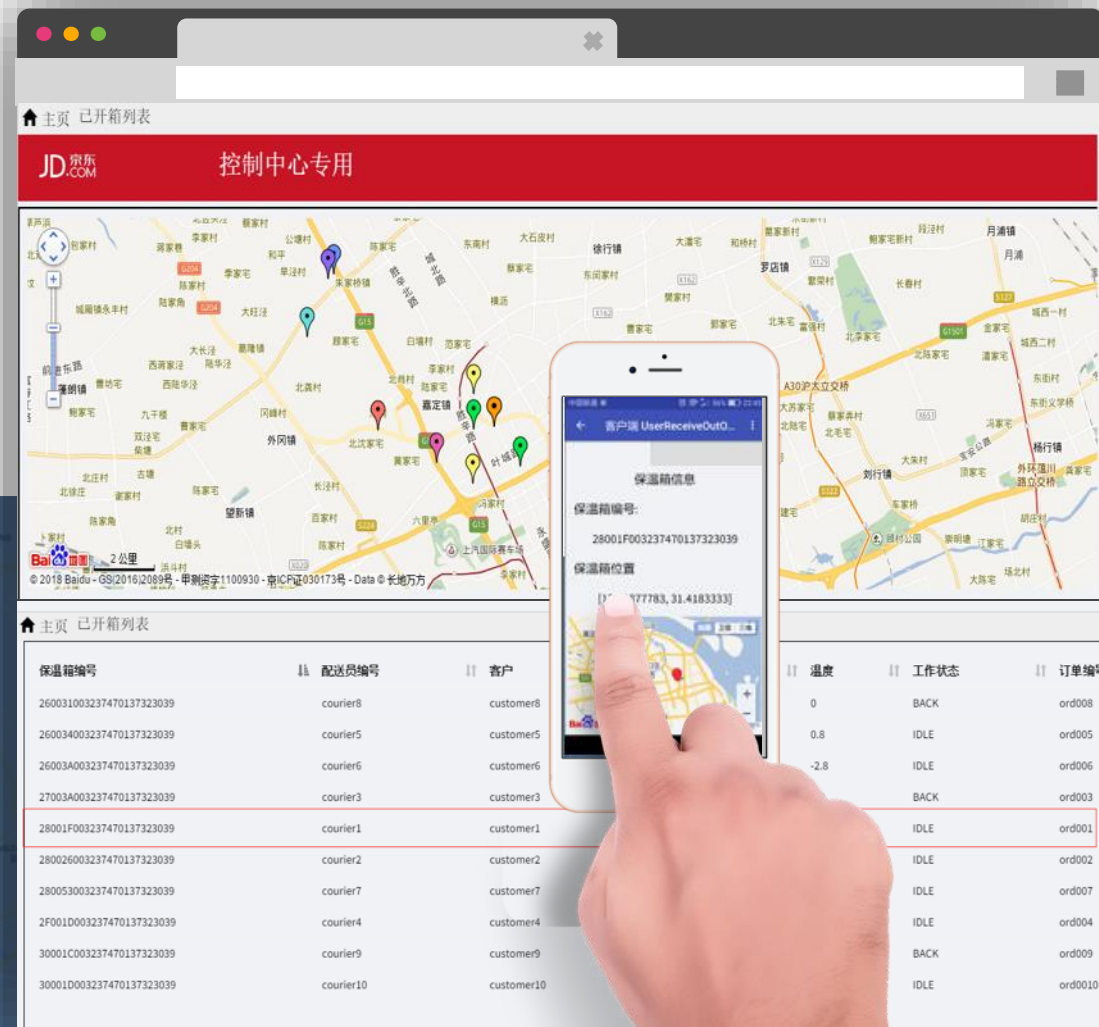


JD.com - China

Application: JD Logistics has become top player in logistics, esp. the cold chain. Using Vantiq, JD Cold Chain is able to **manage the “last mile”** delivery, uplift the service standard, and efficiently retrieve the iceboxes.

Why VANTIQ: Without Vantiq, it's very complex to build the intelligent management and retrieval system for the highly dispersed and moving iceboxes. JD **built the system in weeks** by using VANTIQ.

Transformative Results: The JD Cold Chain has **quickly built** the new management system with low cost to **improve their customer service level** and **strengthen their asset management**.



TUJIA.COM - China

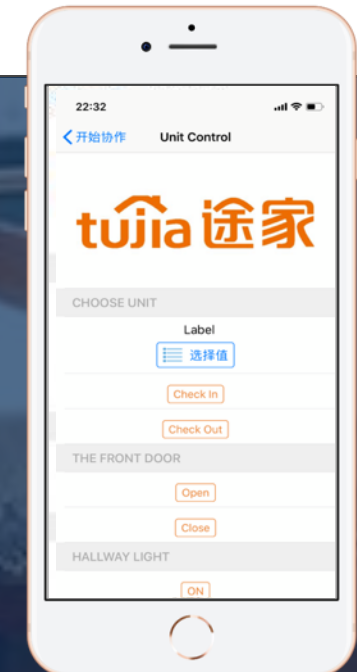
Application: Properties will be outfitted with environmental sensors (temperature, moisture, presence, security systems) in order to provide an integrated application that ensures the **optimal experience** for guests and maximum revenue for owners.

Why VANTIQ: VANTIQ was chosen as the platform capable of supporting a real-time environment involving a massively **distributed** ecosystem of over 5,000 gateways and hundreds of thousands of properties across China.



编号	是否登记入住	密码	前门是否打开	走廊灯
单元1	true	560750	true	false
单元2	true	855160	true	true
单元3	false	已退房密码将重置	false	false
单元4	false	已退房密码将重置	false	false
单元5	true	868685	true	false

Transformative Results: The Dramatic increases in **customer stickiness** and customer experience, and improved management **efficiency**.

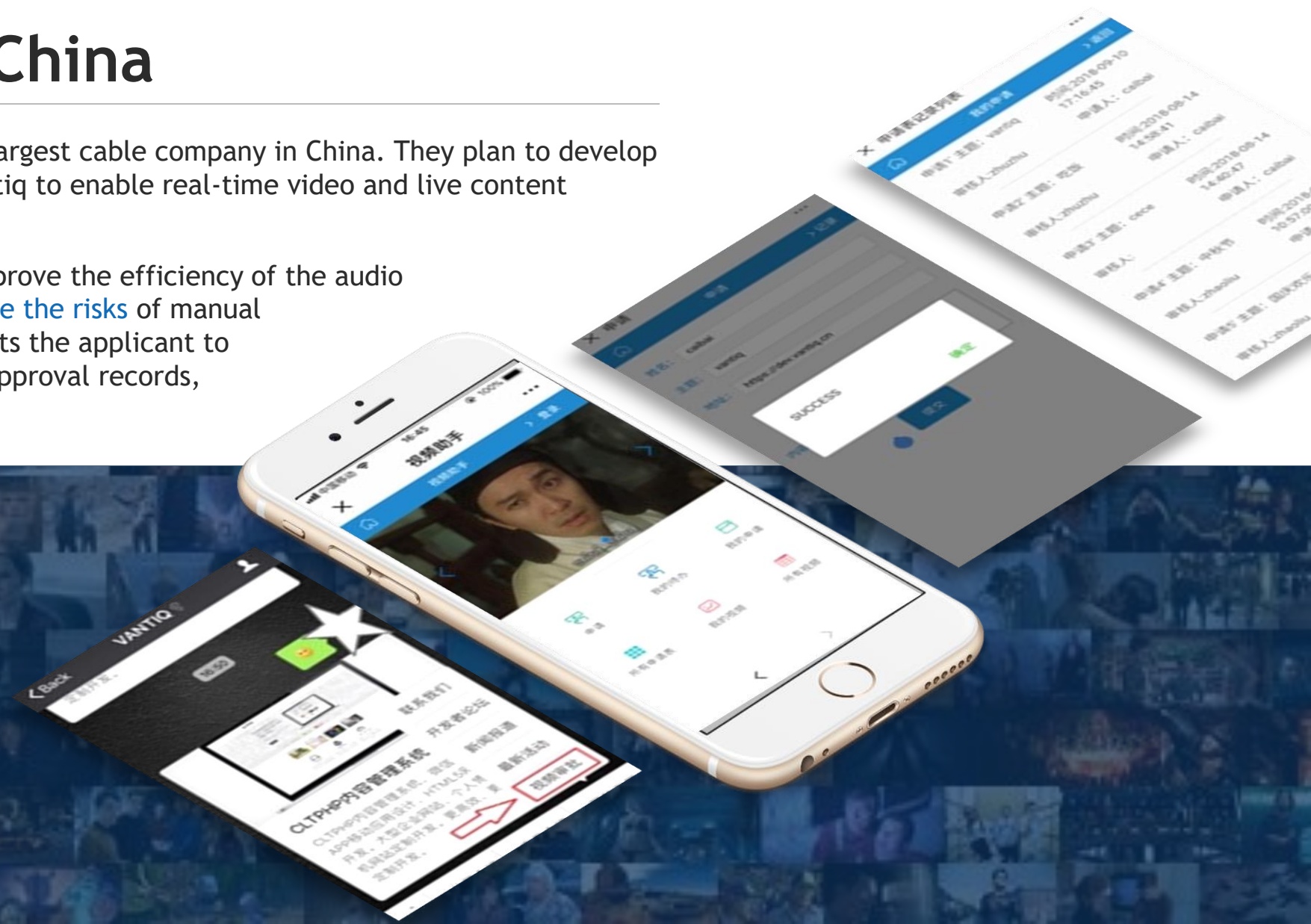


Huashu Cable - China

Application: Huashu Cable is the 2nd largest cable company in China. They plan to develop a **event-driven** platform based on Vantiq to enable real-time video and live content reviewing capability.

Why VANTIQ: Vantiq helps Huashu improve the efficiency of the audio and video content examination, **reduce the risks** of manual auditing, workload and **cost**. It supports the applicant to upload videos, view the records and approval records, examining the whole process.

Transformative Results:
The Huashu Cable can develop the **application in just a few weeks, connecting** with their internal systems.



Banner Engineering - China

Application: Electric motor is a key component in the [smart manufacturing](#). The break-down of motor causes the down time of production. Using VANTIQ, Banner can quickly develop a remote monitoring platform, enabling the users to monitor the status and the historical performance of the motor, and achieve break-down tracking and [prediction](#).

Why VANTIQ: As a supplier of sensors and equipment, Banner Engineering can develop the enterprise-oriented platform in a [few days](#) with Vantiq, and [integrate AI](#) modules for [predictive maintenance](#).

Transformative Results: Banner can efficiently achieve the transformation from a **hardware supplier to IIoT service provider** with **very low cost**, increasing the **competitive advantages**, expanding the new business model, and **improving Banner's customer service**.



Client- Kyocera

Application: Customer is building a next generation HR system using VANTIQ event driven application platform to orchestrate with external systems in a real-time. Factory workers entry on tablet devices various kinds of HR applications, such as work hours, absence leave, trip, etc., or scan hand-written application form. VANTIQ triggers related applications or process depending on entry data for improving efficiency of HR procedures.

Why VANTIQ: Currently silo IT systems are running independently without coordination each others. With VANTIQ intelligence, advanced event broker, customer can build event distribution and adding logic in agile fashions. Complexed rules can be easily made in a visual manner without affecting external applications.

Transformative Results:
Improve efficiency of workers. Agile and high productivity development.
(Note: Including near further development.)

